



Vine Street Stamford, PE9 1QE

Charming one-bedroom period terraced house with modern interior is ideally located just a short stroll from the town centre offering easy access to the many shops, bars, restaurants, schools, and a local train station. VIEWING A MUST

£895 PCM

Vine Street

Stamford, PE9 1QE



- Beautifully Presented 1 Bedroom Terraced House
- Open Plan Living Accommodation with Underfloor Heating
- Spacious Bathroom with separate shower and bath
- Renovated to a High Standard
- Modern Kitchen
- Courtyard Garden
- Walking Distance of Town Centre
- Double Bedroom with Fitted Wardrobes
- Please see Key Facts for Tenants for Material Information Disclosures

Kitchen Diner

10'1" x 11'5" (3.07m x 3.48m)

Living Area

8'10" x 11'5" (2.69m x 3.48m)

Utility Room

8'11" x 6'3" (2.72m x 1.91m)

Landing

WC

6'6" x 3'3" (1.98m x 0.99m)

Bedroom

13'0" max x 12'0" (3.96m max x 3.66m)

Bathroom

6'2" x 12'0" (1.88m x 3.66m)

Courtyard Garden

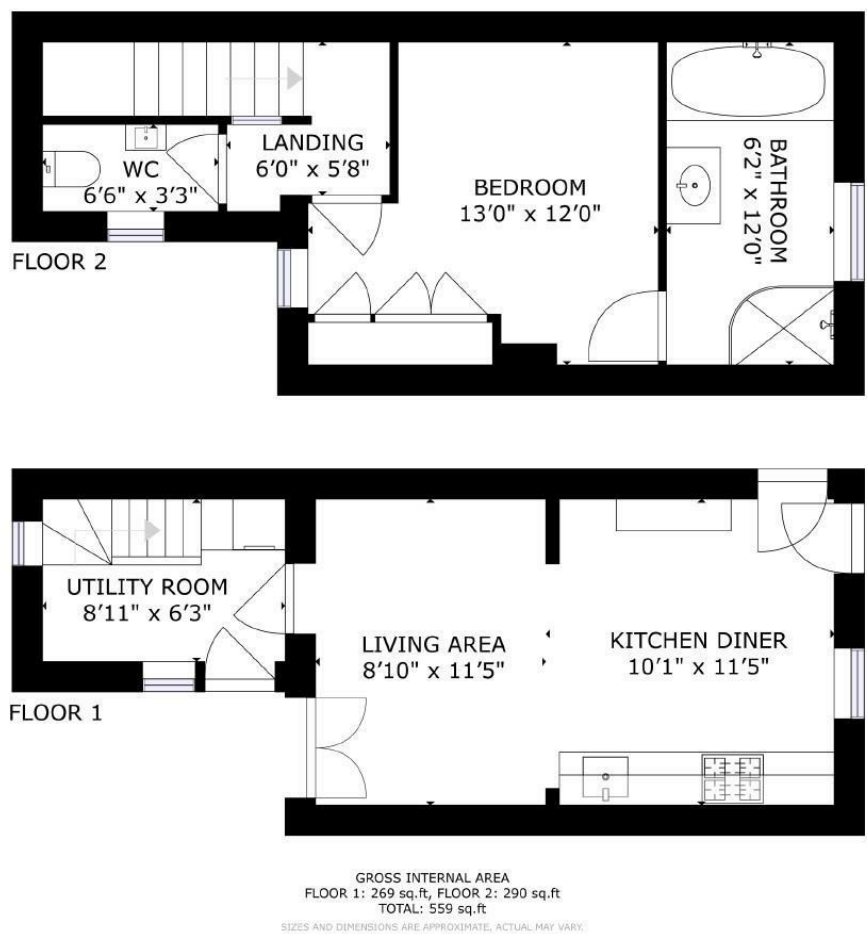


Directions

Please use the following postcode for Sat Nav guidance - PE9 1QE



Floor Plan



These particulars, whilst believed to be accurate are set out as a general outline only for guidance and do not constitute any part of an offer or contract. Intending purchasers should not rely on them as statements of representation of fact, but must satisfy themselves by inspection or otherwise as to their accuracy. No person in this firms employment has the authority to make or give any representation or warranty in respect of the property.

